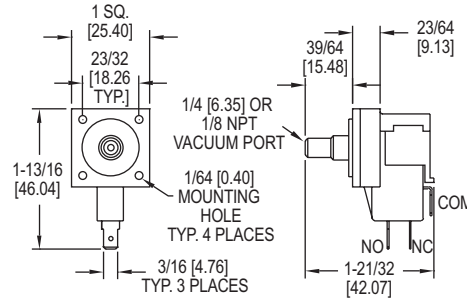
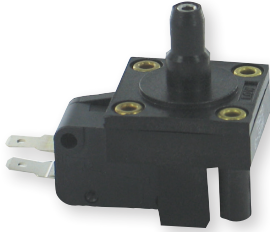


# MINIATURE VACUUM SWITCH

SPDT N/O or N/C Switch, Adjustable Set Point, Ideal for OEM's



Compact, lightweight, and adjustable, the **SERIES MVS** Miniature Vacuum Switch is specially designed for OEM applications. This low cost switch has a minimum life expectancy of 10 million cycles and has an extremely fast response time. Typical applications for the MVS are HVAC, home appliance, dairy systems, medical, office equipment, and pump control.

**FEATURES/BENEFITS**

- High switch cycle means long life for extended duty applications

**APPLICATIONS**

- OEM
- HVAC applications
- Medical equipment
- Dairy equipment
- Pump control

MODEL CHART		
Model	Set Point in H <sub>2</sub> O (mbar)	
	Minimum	Maximum
MVS-1	3 (8)	8 (20)
MVS-2	9 (21)	80 (199)
MVS-3	81 (200)	330 (822)
MVS-4*	3 (8)	8 (20)
MVS-5*	9 (21)	80 (199)
MVS-6*	81 (200)	330 (822)

\*Models have 1/8" male NPT process connections

**SPECIFICATIONS**

**Service:** Air or compatible fluids.  
**Wetted Materials:** Enclosure: Polycarbonate; Diaphragm: Polyurethane.  
**Temperature Limits:** 40 to 150°F (4 to 66°C).  
**Pressure Limits:** Up to maximum range.  
**Repeatability:** ±20%.  
**Switch Type:** SPDT normally open or normally closed.  
**Electrical Rating:** Range 3 to 8 in w.c.: 3 A, 125/250 VAC; Range 9 to 80 in w.c.: 10 A, 125/250 VAC; Range 81 to 330 in w.c.: 15 A, 125/250 VAC.  
**Contacts:** Silver with brass terminals.  
**Electrical Connections:** Terminals 0.187" x 0.20" spade for use with quick disconnects.  
**Process Connections:** Models MVS 1 to MVS 3: Smooth port 0.25" diameter; Models MVS 4 to MVS 6: 1/8" male NPT.  
**Mounting:** Use #2 screws through eyelets.  
**Weight:** Less than 0.671 oz (19 g.)  
**Agency Approvals:** cULus.